



877-868-7211 | www.goAEFIS.com

Connecting Assessment to Teaching and Learning™

Academic Evaluation, Feedback and Intervention System

Improving assessment management while enhancing educational experiences

What is AEFIS?

AEFIS is the web-based assessment management solution and Instructional Decision Support System (IDSS) that promotes personalized learning by delivering real-time information to administrators, faculty, students, and alumni & industry to enhance curriculum development and streamline accreditation processes.



AEFIS Functionalities

- ✓ Assessment Planning & Management
- ✓ Student Learning Outcomes Management
- ✓ Program Design & Alignment
- ✓ Syllabi Development & Management
- ✓ Survey Management
- ✓ Complete & Secure Data Management
- ✓ Comprehensive Reporting



Visit www.goAEFIS.com/demo to request a more information and a webinar for your institution.



"The AEFIS Solution enabled our faculty to focus on enriching and enhancing our curriculum. By putting assessment results to work for our students and faculty, we were able to prevent distractions that arise from operational overhead."

Dr. Banu Onaral, H. H. Sun Professor & Director
School of Biomedical Engineering, Science and Health Systems, Drexel University, Philadelphia, PA

AEFIS | 234 Market Street, 2nd Floor West, Philadelphia, PA 19106 USA

Phone +1-215-873-0800 | Fax +1-215-873-0801 | Email info@goAEFIS.com | www.goAEFIS.com

© Copyright 2010. Academic Evaluation, Feedback and Intervention System—AEFIS is a trademark of Untra Academic Management Solutions, LLC. All Rights Reserved.



Executive Summary

Connecting Assessment to Teaching and Learning™

Academic Evaluation, Feedback and Intervention System

The Academic Evaluation, Feedback & Intervention System—AEFIS, a product of UNTRA Academic Management Solutions, LLC, is the web-based academic assessment management solution that automates best practices in assessment and evaluation in order to enhance curriculum development and streamline the accreditation process. AEFIS is the unified, cost-efficient solution designed to be customized for any institution. The easy-to-use AEFIS dashboards can be modified to suit individual user's needs.



AEFIS Fast Facts

- ✓ Web-based Portal with Customizable Dashboards
- ✓ User Friendly Interface
- ✓ Cost Effective
- ✓ Revolutionary Instructional Decision Support System—IDSS™
- ✓ Developed with Academic Partners
- ✓ Promotes Personalized Learning
- ✓ Streamlines Accreditation Processes

AEFIS Functionalities

- ✓ Assessment Planning & Management
- ✓ Student Learning Outcomes Management
- ✓ Program Design & Alignment
- ✓ Syllabi Development & Management
- ✓ Survey Management
- ✓ Complete & Secure Data Management
- ✓ Comprehensive Reporting

Syllabus Management is at the heart of the AEFIS Platform—it provides an aggregate view of the user information necessary to create strong syllabi. This information includes:

- Course History and Rationale
- Instructor characteristics with Teaching Styles, Teaching Goals, and more...
- Student Learning Outcomes
- Recommendations and Notes regarding previous teaching approaches
- Survey Feedback from Students, Faculty, Alumni and Industry

AEFIS also strengthens the development of institutional programs. Program directors apply real-time assessment data regarding student learning and teaching strategies to develop curricula with the most appropriate course content and scheduling. Research for such processes can take years and multiple faculty members. Under the AEFIS Solution Platform, program directors manage academic programs and curricula using innovative approaches including the mapping of courses, outcomes, and performance criteria at varying levels across the institution. AEFIS works with institutions to enable effective outcomes based assessment by managing inheritance of direct and imbedded assessment outcomes throughout program curricula.

AEFIS is the first Instructional Decision Support System—IDSS™ designed to support personalized student learning. AEFIS eliminates the disconnect between administrators and faculty by focusing on improved student learning with efficient assessment management and accreditation documentation as by-products. While widely used in other professions, Decision Support Systems (DSS) have yet to be applied to higher education. Clinical professionals use DSS to make evidence based decisions in medical environments and similar systems are used in the business world as well. Such systems apply real-time data to support professionals' evidence-based decision making. AEFIS is the first Instructional Decision Support System—IDSS™ for academia. AEFIS presents data to faculty graphically to help instructors recognize class characteristics quickly, with capabilities to drill down to individual student data. The application of this technology results in the continuous improvement of both teaching and learning. As the pioneer IDSS in academic assessment software, AEFIS is highly supported by its existing client base and academic partners.

AEFIS was developed in academic collaboration with Drexel University School of Biomedical Engineering, Science and Health Systems. This relationship has strengthened the value of the product and its goals to promote personalized learning. This goal aligns with the National Academy of Engineering's Grand Challenge to address students' varying learning styles with effective curricular planning and implementation of the most appropriate teaching strategies. This focus on personalized learning supports the change to the culture of assessment. AEFIS reports not only on what instructors are teaching, but more importantly, on what students are learning.

Visit www.goAEFIS.com/demo to request a more information and a webinar for your institution.

AEFIS | 234 Market Street, 2nd Floor West, Philadelphia, PA 19106 USA






Phone +1-215-873-0800 | Fax +1-215-873-0801 | Email info@goAEFIS.com | www.goAEFIS.com

© Copyright 2010. Academic Evaluation, Feedback and Intervention System—AEFIS is a trademark of Untra Academic Management Solutions, LLC. All Rights Reserved.

Academic Evaluation, Feedback and Intervention System



5 things you should know about the Academic Evaluation, Feedback and Intervention System—AEFIS.

<p>1</p>	<p>Data Quality, Not Quantity</p> <ul style="list-style-type: none"> - Retrieve relevant student learning data on customizable dashboards - Effective reporting is displayed graphically with abilities to export to multiple forms - Program Alignment Tool shows curriculum gaps with one click 	
<p>2</p>	<p>User Friendly</p> <ul style="list-style-type: none"> - Reliable, user-friendly interface for Administrators, Faculty, Students, and Alumni - Useful Help Features with Tips and Warnings - Online Support 	
<p>3</p>	<p>Comprehensive Reporting</p> <ul style="list-style-type: none"> - Real-time, comprehensive reporting that provides users choices in how to view data - View Reports as PDFs or Excel Spreadsheets - Find what you are looking for with effective filter functionalities 	
<p>4</p>	<p>Instructional Support</p> <ul style="list-style-type: none"> - Instructional Decision Support System™ features and functionality - Syllabus provides aggregate view of course data and user feedback - Curriculum Design Tool 	
<p>5</p>	<p>Proven Success</p> <ul style="list-style-type: none"> - Developed in collaboration with academic institutions - National Science Foundation funding for development - Worked with institutions through multiple accreditation processes 	

Based on *Technology & Learning's* "Buying an Assessment System: Five Considerations" <www.techlearning.com>

A message from the AEFIS Team

Thank you for taking the time to learn more about our AEFIS Approach. We work with institutions to create customizable solutions that reflect the best assessment practices in this shift to the new culture of assessment. Please visit our website at www.goAEFIS.com to learn more or contact us directly with questions at 877-868-7211.

Visit www.goAEFIS.com/demo to request a more information and a webinar for your institution.

Academic Evaluation, Feedback and Intervention System—AEFIS

AEFIS is the web-based assessment management solution and Instructional Decision Support System (IDSS) that promotes personalized learning by delivering real-time information to administrators, faculty, students, and alumni & industry to enhance curriculum development and streamline accreditation processes.

AEFIS | 234 Market Street, 2nd Floor West, Philadelphia, PA 19106 USA

Phone +1-215-873-0800 | Fax +1-215-873-0801 | Email info@goAEFIS.com | www.goAEFIS.com

© Copyright 2010. Academic Evaluation, Feedback and Intervention System—AEFIS is a trademark of Untra Academic Management Solutions, LLC. All Rights Reserved.



AEFIS Core Features

Connecting Assessment to Teaching and Learning™

Academic Evaluation, Feedback and Intervention System

The AEFIS Solution Platform provides these core modules, but has capabilities to add APPs and Plug-ins, as developed, to best benefit assessment practices.

AEFIS Core System	<ul style="list-style-type: none"> - Unified web-based portal for all assessment activity - User specific dashboards for Administrators, Faculty, Students, and Alumni & Industry - Easy Integration with academic systems through automated data import
Student Learning Outcomes Management	<ul style="list-style-type: none"> - Create and manage Student Learning Outcomes (SLOs) - Create and manage Performance Criteria - Develop rubrics - Manage Outcomes across institutional levels
Academic Program Design and Alignment Management	<ul style="list-style-type: none"> - Create and manage academic program curricula - Map Outcomes and Performance Criteria to program and course levels - Efficient inheritance across institutional levels
Assessment Measures Management	<ul style="list-style-type: none"> - Implement Direct and Embedded Assessment Measures - Manage assessment activities across institutional levels
Course Evaluation & Survey Management	<ul style="list-style-type: none"> - Create and manage custom surveys for internal and external users - Student and Faculty Course Evaluation Surveys - Send invitations and reminders - Manage survey rewards - Comprehensive reporting that can be documented in MS Excel and Adobe PDF
Course Syllabi Management	<ul style="list-style-type: none"> - Develop and manage course syllabi - Link Course Student Learning Outcomes or Course Objectives to Program Learning Outcomes - View syllabi history - View and attach Notes and Recommendations
Instructional Decision Support System	<ul style="list-style-type: none"> - Incoming Student/Course Profiles (ISCP) - Course Rationale and History Profiles (CRHP) show how courses fit into the curriculum - Evaluation Results Notes and Recommendations (ERNR)
Meeting Minutes and Document Management	<ul style="list-style-type: none"> - Context based document repository for assessment and accreditation documentation - Efficient search functionalities to manage and reference Meeting Minutes and documents - Secure data management

Visit www.goAEFIS.com/demo to request a more information and a webinar for your institution.

Academic Evaluation, Feedback and Intervention System—AEFIS

AEFIS is the web-based assessment management solution and Instructional Decision Support System (IDSS) that promotes personalized learning by delivering real-time information to administrators, faculty, students, and alumni & industry to enhance curriculum development and streamline accreditation processes.

AEFIS | 234 Market Street, 2nd Floor West, Philadelphia, PA 19106 USA

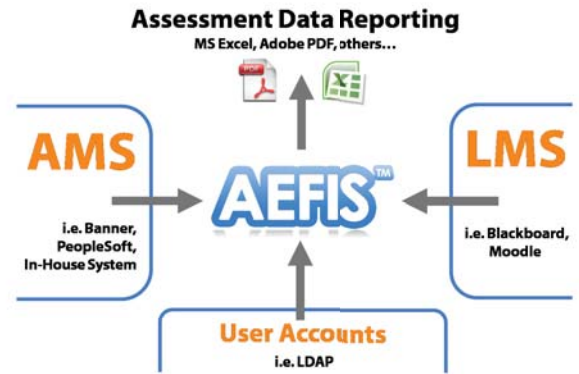
Phone +1-215-873-0800 | Fax +1-215-873-0801 | Email info@goAEFIS.com | www.goAEFIS.com

© Copyright 2010. Academic Evaluation, Feedback and Intervention System—AEFIS is a trademark of Untra Academic Management Solutions, LLC. All Rights Reserved.

Academic Evaluation, Feedback and Intervention System

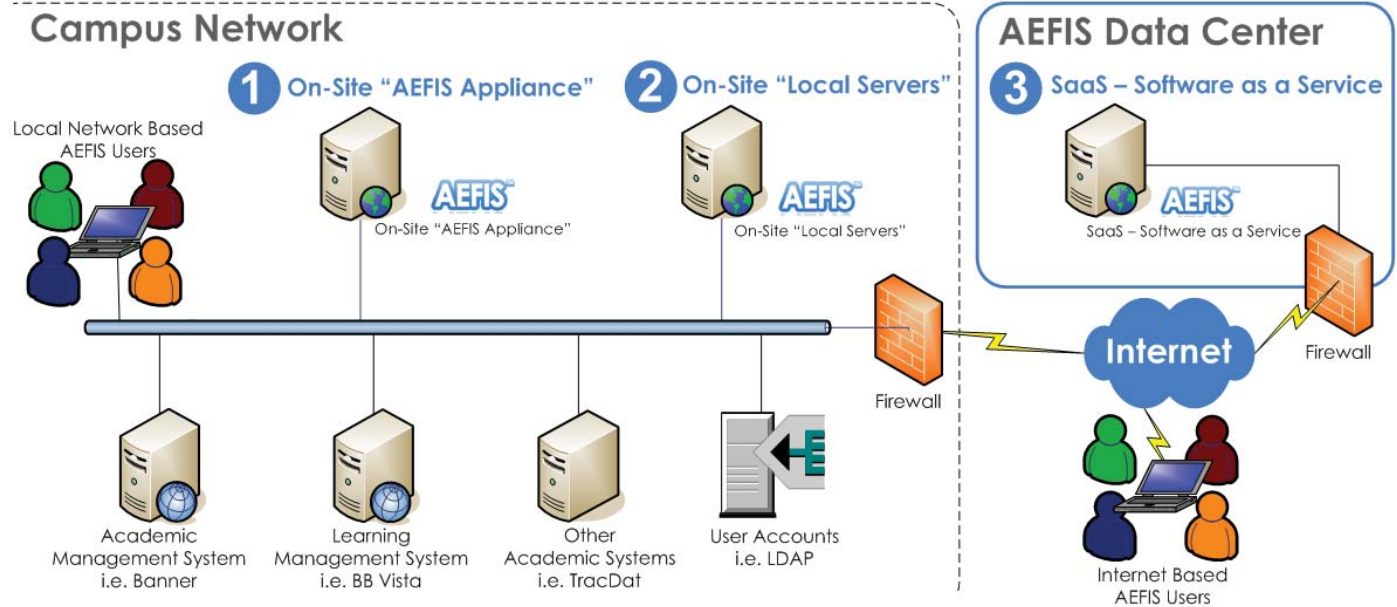
AEFIS Integration with Campus Systems

- ✓ Self-sufficient system able to integrate with other systems
- ✓ AEFIS Data Connector (ADC) imports, translates, validates, and integrates data from Academic and Learning Management Systems and LDAP accounts
- ✓ Outputs comprehensive assessment data reports to Microsoft Excel and Adobe PDF



AEFIS Service Delivery Options

- 1 **On-Site "AEFIS Appliance"** – AEFIS Appliance deployed locally for a "semi turn-key" delivery provided by AEFIS and infrastructure provided by institution.
- 2 **On-Site "Local Servers"** – Local servers and infrastructure provided by institution.
- 3 **SaaS – Software as a Service (SaaS)** – for "full turn-key" delivery using dedicated server hosting services provided by UntraAMS. This delivery model may require site-to-site VPN for integration with external systems.



Visit www.goAEFIS.com/demo to request a more information and a webinar for your institution.

Academic Evaluation, Feedback and Intervention System—AEFIS

AEFIS is the web-based assessment management solution and Instructional Decision Support System (IDSS) that promotes personalized learning by delivering real-time information to administrators, faculty, students, and alumni & industry to enhance curriculum development and streamline accreditation processes.

AEFIS | 234 Market Street, 2nd Floor West, Philadelphia, PA 19106 USA

Phone +1-215-873-0800 | Fax +1-215-873-0801 | Email info@goAEFIS.com | www.goAEFIS.com